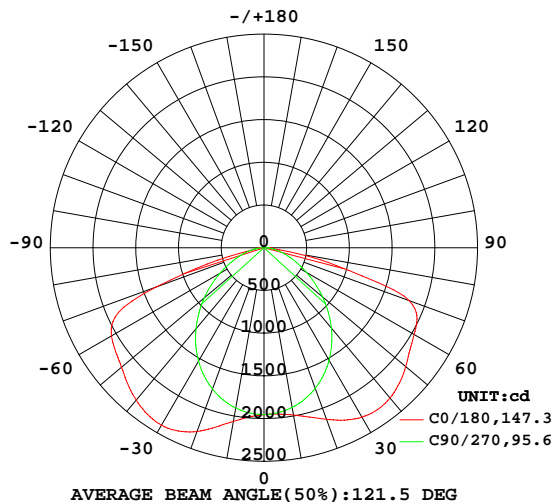


LUMINAIRE PHOTOMETRIC TEST REPORT

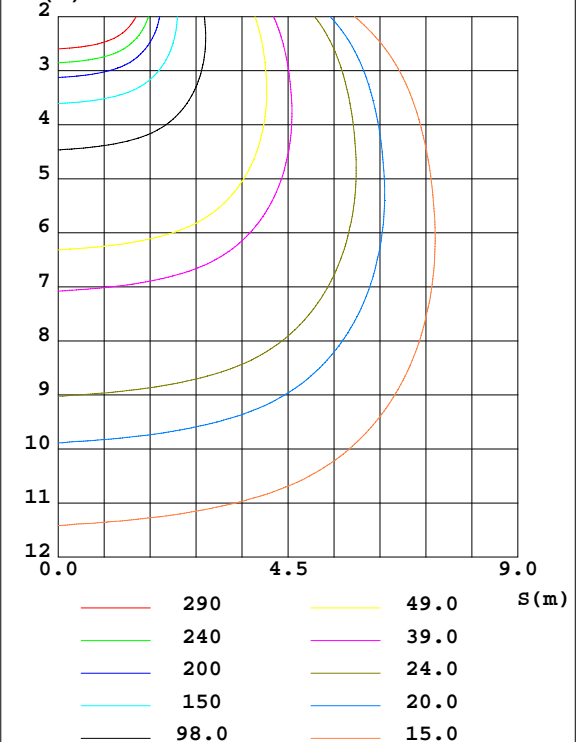
Test:U:229.69V I:0.3438A P:77.961W PF:0.9872 Freq:49.99Hz Lamp Flux:7904.68x1 lm		
NAME:	TYPE:	WEIGHT:
SPEC.:	DIM.: 960*42*38	SERIAL No.:
MFR.: NLD25-0020-01	SUR.:0.79*0.035	Shielding Angle:

DATA OF LAMP		PHOTOMETRIC DATA Eff: 101.39 lm/W			
MODEL		Imax(cd)	2398	S/MH(C0/180)	1.76
NOMINAL POWER(W)	60	LOR(%)	100.0	S/MH(C90/270)	1.18
RATED VOLTAGE(V)	230.0	TOTAL FLUX(lm)	7904.7	η UP,DN(C0-180)	0.0,50.1
NOMINAL FLUX(lm)	7904.68	CIE CLASS	DIRECT	η UP,DN(C180-360)	0.0,49.9
LAMPS INSIDE	1	η up(%)	0.0	CIBSE SHR NOM	1.50
TEST VOLTAGE(V)	230.0	η down(%)	100.0	CIBSE SHR MAX	1.55

LUMINOUS INTENSITY DISTRIBUTION DIAGRAM



C0 PLANE ISOLUX DIAGRAM (UNIT:lx)



C Range: 0 - 360DEG
C Interval: 22.5DEG
Test Speed: HIGH
Temperature:25.3DEG
Operators:
Test Date:2025-09-28

γ Range: 0 - 90DEG
 γ Interval: 1.0DEG
Test System:EVERFINE GO-2000A_V1 SYSTEM V2.0.406.10
Humidity:65.0%
Test Distance:11.700m [K=1.0000]
Remarks:

ZONAL FLUX DIAGRAM

ZONAL FLUX DIAGRAM:

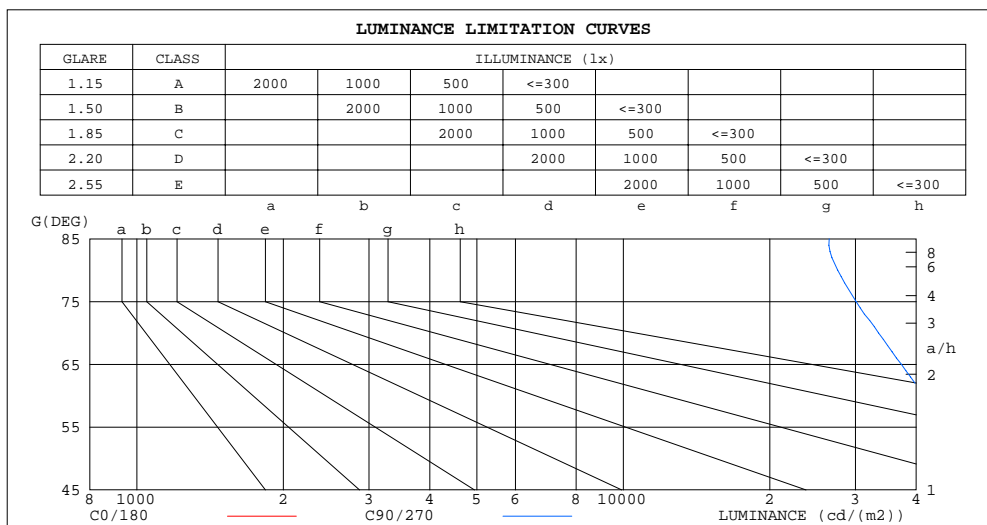
γ	C0	C45	C90	C135	C180	C225	C270	C315	γ	Φ zone	Φ total	$\%lum, lamp$
10	1989	1936	1897	1984	2064	1987	1905	1938	0- 10	186.7	186.7	2.36,2.36
20	2136	1934	1753	2045	2288	2042	1761	1949	10- 20	560.2	747.0	9.45,9.45
30	2290	1941	1522	2106	2398	2092	1532	1972	20- 30	920.0	1667	21.1,21.1
40	2295	1933	1227	2075	2327	2063	1238	1971	30- 40	1213	2880	36.4,36.4
50	2166	1843	894.3	1919	2177	1913	913.3	1878	40- 50	1380	4260	53.9,53.9
60	2029	1627	574.1	1654	2062	1645	593.9	1658	50- 60	1404	5664	71.7,71.7
70	1806	1314	316.5	1340	1343	1329	326.6	1358	60- 70	1298	6962	88.1,88.1
80	387.1	742.5	132.4	353.8	133.4	399.4	138.5	749.7	70- 80	796.5	7758	98.1,98.1
90	41.75	37.60	11.12	13.71	17.87	14.24	14.14	39.05	80- 90	146.3	7905	100,100
100									90-100			
110									100-110			
120									110-120			
130									120-130			
140									130-140			
150									140-150			
160									150-160			
170									160-170			
180									170-180			
DEG	LUMINOUS INTENSITY:cd									UNIT:lm		

C Range: 0 - 360DEG
C Interval: 22.5DEG
Test Speed: HIGH
Temperature:25.3DEG
Operators:
Test Date:2025-09-28

γ Range: 0 - 90DEG
 γ Interval: 1.0DEG
Test System:EVERFINE GO-2000A_V1 SYSTEM V2.0.406.10
Humidity:65.0%
Test Distance:11.700m [K=1.0000]
Remarks:

LUMINANCE LIMITATION CURVES

Test:U:229.69V I:0.3438A P:77.961W PF:0.9872 Freq:49.99Hz Lamp Flux:7904.68x1 lm		
NAME:	TYPE:	WEIGHT:
SPEC.:	DIM.: 960*42*38	SERIAL No.:
MFR.: NLD25-0020-01	SUR.:0.79*0.035	Shielding Angle:



LUMINANCE cd/(m2)		
G(DEG)	C0/180	C90/270
85	44680	26498
80	80623	27583
75	142505	30106
70	191022	33472
65	169075	37292
60	146757	41523
55	131538	45979
50	121849	50320
45	114687	54367

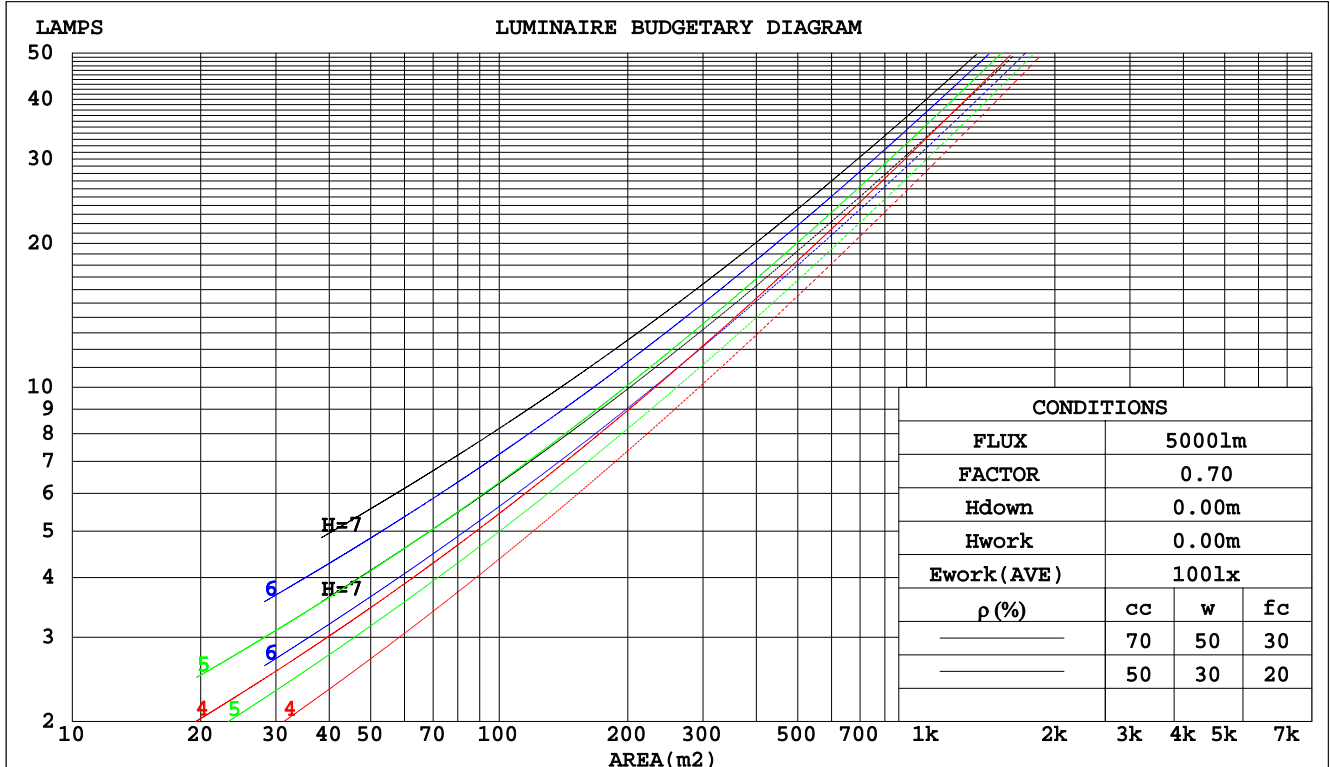
C Range: 0 - 360DEG
C Interval: 22.5DEG
Test Speed: HIGH
Temperature:25.3DEG
Operators:
Test Date:2025-09-28

γ Range: 0 - 90DEG
 γ Interval: 1.0DEG
Test System:EVERFINE GO-2000A_V1 SYSTEM V2.0.406.10
Humidity:65.0%
Test Distance:11.700m [K=1.0000]
Remarks:

CU AND LUMINAIRE BUDGETARY ESTIMATE DIAGRAM

Test:U:229.69V I:0.3438A P:77.961W PF:0.9872 Freq:49.99Hz Lamp Flux:7904.68x1 lm		
NAME:	TYPE:	WEIGHT:
SPEC.:	DIM.: 960*42*38	SERIAL No.:
MFR.: NLD25-0020-01	SUR.:0.79*0.035	Shielding Angle:

pcc	80%			70%			50%			30%			10%			0
pw	50%	30%	10%	50%	30%	10%	50%	30%	10%	50%	30%	10%	50%	30%	10%	0
pfc	20%			20%			20%			20%			20%			0
RCR	RCR:Room Cavity Ratio			Coefficients of Utilization(CU)												
0.0	1.19	1.19	1.19	1.16	1.16	1.16	1.11	1.11	1.11	1.06	1.06	1.06	1.02	1.02	1.02	1.00
1.0	1.02	.98	.93	1.00	.96	.92	.96	.92	.89	.92	.89	.86	.88	.86	.84	.81
2.0	.88	.80	.74	.86	.79	.73	.82	.76	.71	.79	.74	.69	.76	.71	.68	.66
3.0	.76	.67	.60	.74	.66	.59	.71	.64	.58	.68	.62	.57	.65	.60	.56	.54
4.0	.66	.57	.49	.65	.56	.49	.62	.54	.48	.60	.53	.48	.58	.52	.47	.45
5.0	.59	.49	.42	.57	.48	.41	.55	.47	.41	.53	.46	.40	.51	.45	.40	.38
6.0	.52	.43	.36	.51	.42	.36	.49	.41	.35	.48	.40	.35	.46	.40	.35	.32
7.0	.47	.38	.31	.46	.37	.31	.45	.37	.31	.43	.36	.30	.42	.35	.30	.28
8.0	.43	.34	.27	.42	.33	.27	.41	.33	.27	.39	.32	.27	.38	.32	.27	.25
9.0	.39	.30	.24	.38	.30	.24	.37	.30	.24	.36	.29	.24	.35	.29	.24	.22
10.0	.36	.27	.22	.35	.27	.22	.34	.27	.22	.33	.26	.22	.32	.26	.22	.20



C Range: 0 - 360DEG
C Interval: 22.5DEG
Test Speed: HIGH
Temperature:25.3DEG
Operators:
Test Date:2025-09-28

γ Range: 0 - 90DEG
γ Interval: 1.0DEG
Test System:EVERFINE GO-2000A_V1 SYSTEM V2.0.406.10
Humidity:65.0%
Test Distance:11.700m [K=1.0000]
Remarks:

WEC AND CCEC

Test:U:229.69V I:0.3438A P:77.961W PF:0.9872 Freq:49.99Hz Lamp Flux:7904.68x1 lm					
NAME:		TYPE:		WEIGHT:	
SPEC.:		DIM.: 960*42*38		SERIAL No.:	
MFR.: NLD25-0020-01		SUR.:0.79*0.035		Shielding Angle:	

pcc	80%			70%			50%			30%			10%			0
pw	50%	30%	10%	50%	30%	10%	50%	30%	10%	50%	30%	10%	50%	30%	10%	0
pfc	20%			20%			20%			20%			20%			0
RCR	RCR:Room Cavity Ratio						Wall Exitance Coefficients(WEC)									
0.0																
1.0	.340	.193	.061	.333	.190	.060	.319	.183	.058	.307	.177	.057	.296	.171	.055	
2.0	.319	.175	.054	.313	.172	.053	.301	.167	.052	.290	.163	.051	.280	.158	.050	
3.0	.294	.156	.047	.288	.154	.046	.277	.150	.046	.267	.147	.045	.258	.143	.044	
4.0	.269	.140	.041	.264	.138	.041	.254	.135	.040	.246	.132	.040	.237	.129	.039	
5.0	.247	.126	.036	.242	.124	.036	.234	.122	.036	.226	.119	.035	.219	.117	.035	
6.0	.227	.114	.033	.223	.113	.032	.216	.111	.032	.209	.109	.032	.202	.107	.032	
7.0	.210	.104	.029	.207	.103	.029	.200	.101	.029	.194	.099	.029	.188	.098	.029	
8.0	.196	.096	.027	.192	.095	.027	.186	.093	.027	.181	.092	.026	.176	.090	.026	
9.0	.182	.088	.025	.180	.088	.025	.174	.086	.024	.169	.085	.024	.164	.084	.024	
10.0	.171	.082	.023	.168	.081	.023	.164	.080	.023	.159	.079	.022	.155	.078	.022	

pcc	80%			70%			50%			30%			10%			0
pw	50%	30%	10%	50%	30%	10%	50%	30%	10%	50%	30%	10%	50%	30%	10%	0
pfc	20%			20%			20%			20%			20%			0
RCR	RCR:Room Cavity Ratio						Ceiling Cavity Exitance Coefficients(CCEC)									
0.0	.190	.190	.190	.163	.163	.163	.111	.111	.111	.064	.064	.064	.020	.020	.020	
1.0	.182	.156	.132	.156	.134	.114	.107	.092	.079	.061	.053	.046	.020	.017	.015	
2.0	.176	.132	.095	.151	.113	.082	.103	.078	.057	.060	.046	.033	.019	.015	.011	
3.0	.169	.114	.071	.145	.099	.062	.099	.069	.043	.057	.040	.025	.018	.013	.008	
4.0	.162	.101	.055	.139	.088	.048	.095	.061	.034	.055	.036	.020	.018	.012	.007	
5.0	.154	.091	.045	.132	.079	.039	.091	.055	.027	.053	.032	.016	.017	.011	.005	
6.0	.147	.083	.037	.126	.072	.032	.087	.050	.023	.051	.030	.014	.016	.010	.004	
7.0	.140	.076	.032	.120	.066	.028	.083	.046	.020	.048	.027	.012	.016	.009	.004	
8.0	.133	.070	.027	.115	.061	.024	.079	.043	.017	.046	.025	.010	.015	.008	.003	
9.0	.127	.065	.024	.109	.057	.021	.076	.040	.015	.044	.024	.009	.014	.008	.003	
10.0	.121	.061	.022	.104	.053	.019	.072	.037	.013	.042	.022	.008	.014	.007	.003	

C Range: 0 - 360DEG
 C Interval: 22.5DEG
 Test Speed: HIGH
 Temperature:25.3DEG
 Operators:
 Test Date:2025-09-28

γ Range: 0 - 90DEG
 γ Interval: 1.0DEG
 Test System:EVERFINE GO-2000A_V1 SYSTEM V2.0.406.10
 Humidity:65.0%
 Test Distance:11.700m [K=1.0000]
 Remarks:

UGR(Unified Glare Rating) Table

Test:U:229.69V I:0.3438A P:77.961W PF:0.9872 Freq:49.99Hz Lamp Flux:7904.68x1 lm										
NAME:			TYPE:			WEIGHT:				
SPEC.:			DIM.: 960*42*38			SERIAL No.:				
MFR.: NLD25-0020-01			SUR.:0.79*0.035			Shielding Angle:				
ceiling/cavity	0.7	0.7	0.5	0.5	0.3	0.7	0.7	0.5	0.5	0.3
walls	0.5	0.3	0.5	0.3	0.3	0.5	0.3	0.5	0.3	0.3
working plane	0.2	0.2	0.2	0.2	0.2	0.2	0.2	0.2	0.2	0.2
Room dimensions	Viewed crosswise					Viewed endwise				
x = 2H y = 2H	31.1	32.7	31.4	33.0	33.2	26.3	27.9	26.6	28.1	28.3
3H	34.0	35.6	34.3	35.8	36.0	27.2	28.8	27.6	29.0	29.3
4H	35.0	36.4	35.3	36.7	36.9	27.6	29.1	27.9	29.3	29.6
6H	35.3	36.6	35.6	36.9	37.2	27.9	29.2	28.2	29.5	29.8
8H	35.3	36.6	35.6	36.9	37.2	27.9	29.2	28.3	29.5	29.8
12H	35.2	36.5	35.6	36.8	37.1	28.0	29.2	28.3	29.5	29.9
4H 2H	31.7	33.1	32.0	33.4	33.7	28.5	30.0	28.9	30.2	30.5
3H	34.9	36.2	35.3	36.5	36.8	29.8	31.1	30.2	31.4	31.7
4H	36.0	37.2	36.4	37.5	37.8	30.3	31.4	30.6	31.8	32.1
6H	36.4	37.5	36.8	37.8	38.2	30.5	31.6	30.9	31.9	32.3
8H	36.4	37.4	36.8	37.8	38.2	30.6	31.6	31.1	32.0	32.4
12H	36.4	37.3	36.8	37.7	38.1	30.7	31.6	31.1	32.0	32.4
8H 4H	36.3	37.3	36.7	37.6	38.0	32.0	33.0	32.4	33.4	33.8
6H	36.9	37.7	37.3	38.1	38.5	32.6	33.4	33.0	33.8	34.2
8H	36.9	37.6	37.4	38.1	38.5	32.7	33.4	33.2	33.8	34.3
12H	36.9	37.5	37.4	38.0	38.5	32.8	33.4	33.3	33.9	34.4
12H 4H	36.3	37.2	36.7	37.6	38.0	32.2	33.1	32.6	33.5	33.9
6H	36.9	37.6	37.4	38.0	38.5	32.8	33.5	33.3	34.0	34.4
8H	37.0	37.6	37.5	38.0	38.5	33.0	33.6	33.5	34.1	34.6
Variations with the observer position at spacings:										
S = 1.0H	+ 0.1 / - 0.1					+ 0.1 / - 0.2				
1.5H	+ 0.2 / - 0.4					+ 0.2 / - 0.4				
2.0H	+ 0.4 / - 0.5					+ 0.6 / - 0.6				

CIE Pub.117, 7905 lm Total Lamp Luminous Flux Corrected ($8\log(F/F_0) = 7.2$)

C Range: 0 - 360DEG
 C Interval: 22.5DEG
 Test Speed: HIGH
 Temperature:25.3DEG
 Operators:
 Test Date:2025-09-28

γ Range: 0 - 90DEG
 γ Interval: 1.0DEG
 Test System:EVERFINE GO-2000A_V1 SYSTEM V2.0.406.10
 Humidity:65.0%
 Test Distance:11.700m [K=1.0000]
 Remarks:

UTILIZATION FACTORS TABLE

Test:U:229.69V I:0.3438A P:77.961W PF:0.9872 Freq:49.99Hz Lamp Flux:7904.68x1 lm		
NAME:	TYPE:	WEIGHT:
SPEC.:	DIM.: 960*42*38	SERIAL No.:
MFR.: NLD25-0020-01	SUR.:0.79*0.035	Shielding Angle:

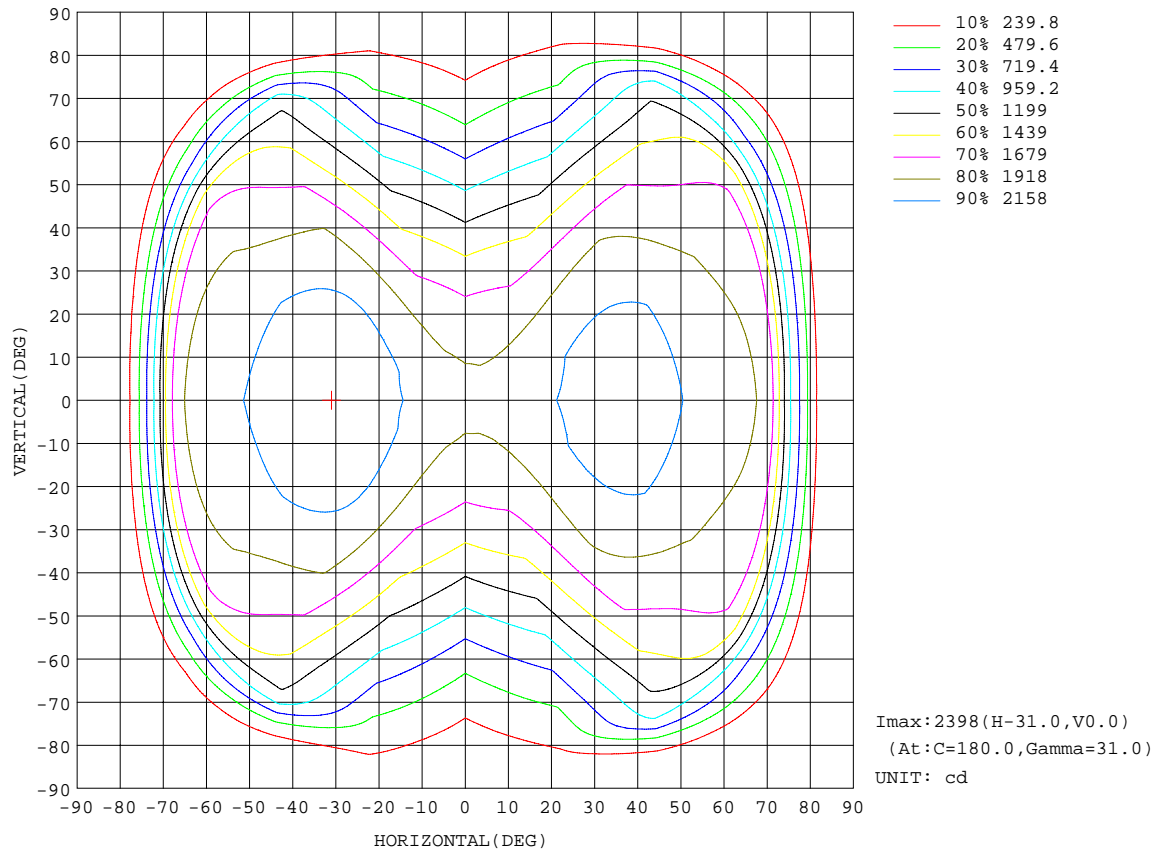
REFLECTANCE										
Ceiling	0.8	0.8	0.8	0.7	0.7	0.7	0.5	0.5	0.5	0
Walls	0.7	0.5	0.3	0.7	0.5	0.3	0.7	0.5	0.3	0
Working plane	0.2	0.2	0.2	0.2	0.2	0.2	0.2	0.2	0.2	0
ROOM INDEX	UTILIZATION FACTORS(PERCENT) $k(RI) \times RCR = 5$									
$k = 0.60$	53	41	33	52	40	33	51	40	33	26
0.80	63	50	42	62	50	42	60	49	42	34
1.00	72	59	51	70	59	51	68	60	50	43
1.25	79	67	59	77	67	59	75	65	58	50
1.50	84	73	65	83	72	65	79	71	64	56
2.00	92	82	75	90	81	74	86	79	73	64
2.50	96	88	81	94	86	80	90	84	78	69
3.00	100	93	86	98	91	85	94	88	83	74
4.00	105	98	93	102	97	92	98	93	89	80
5.00	108	102	98	105	100	96	100	97	93	84
ROOM INDEX	UF(total)									Direct
According to DIN EN 13032-2 2004			Suspended					SHRNOM = 1.25		

C Range: 0 - 360DEG
C Interval: 22.5DEG
Test Speed: HIGH
Temperature:25.3DEG
Operators:
Test Date:2025-09-28

γ Range: 0 - 90DEG
 γ Interval: 1.0DEG
Test System:EVERFINE GO-2000A_V1 SYSTEM V2.0.406.10
Humidity:65.0%
Test Distance:11.700m [K=1.0000]
Remarks:

ISOCANDELA DIAGRAM

Test:U:229.69V I:0.3438A P:77.961W PF:0.9872 Freq:49.99Hz Lamp Flux:7904.68x1 lm		
NAME:	TYPE:	WEIGHT:
SPEC.:	DIM.: 960*42*38	SERIAL No.:
MFR.: NLD25-0020-01	SUR.:0.79*0.035	Shielding Angle:

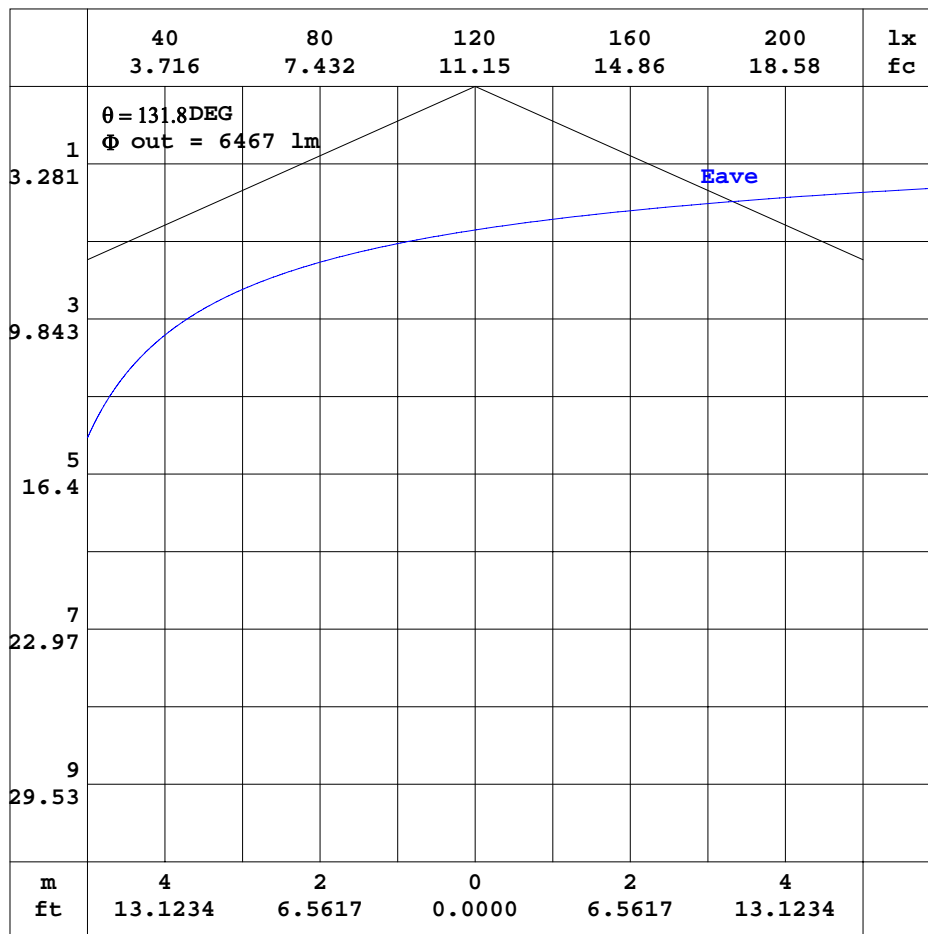


C Range: 0 - 360DEG
C Interval: 22.5DEG
Test Speed: HIGH
Temperature: 25.3DEG
Operators:
Test Date: 2025-09-28

γ Range: 0 - 90DEG
 γ Interval: 1.0DEG
Test System: EVERFINE GO-2000A_V1 SYSTEM V2.0.406.10
Humidity: 65.0%
Test Distance: 11.700m [K=1.0000]
Remarks:

AAI CURVES

Test:U:229.69V I:0.3438A P:77.961W PF:0.9872 Freq:49.99Hz Lamp Flux:7904.68x1 lm		
NAME:	TYPE:	WEIGHT:
SPEC.:	DIM.: 960*42*38	SERIAL No.:
MFR.: NLD25-0020-01	SUR.:0.79*0.035	Shielding Angle:



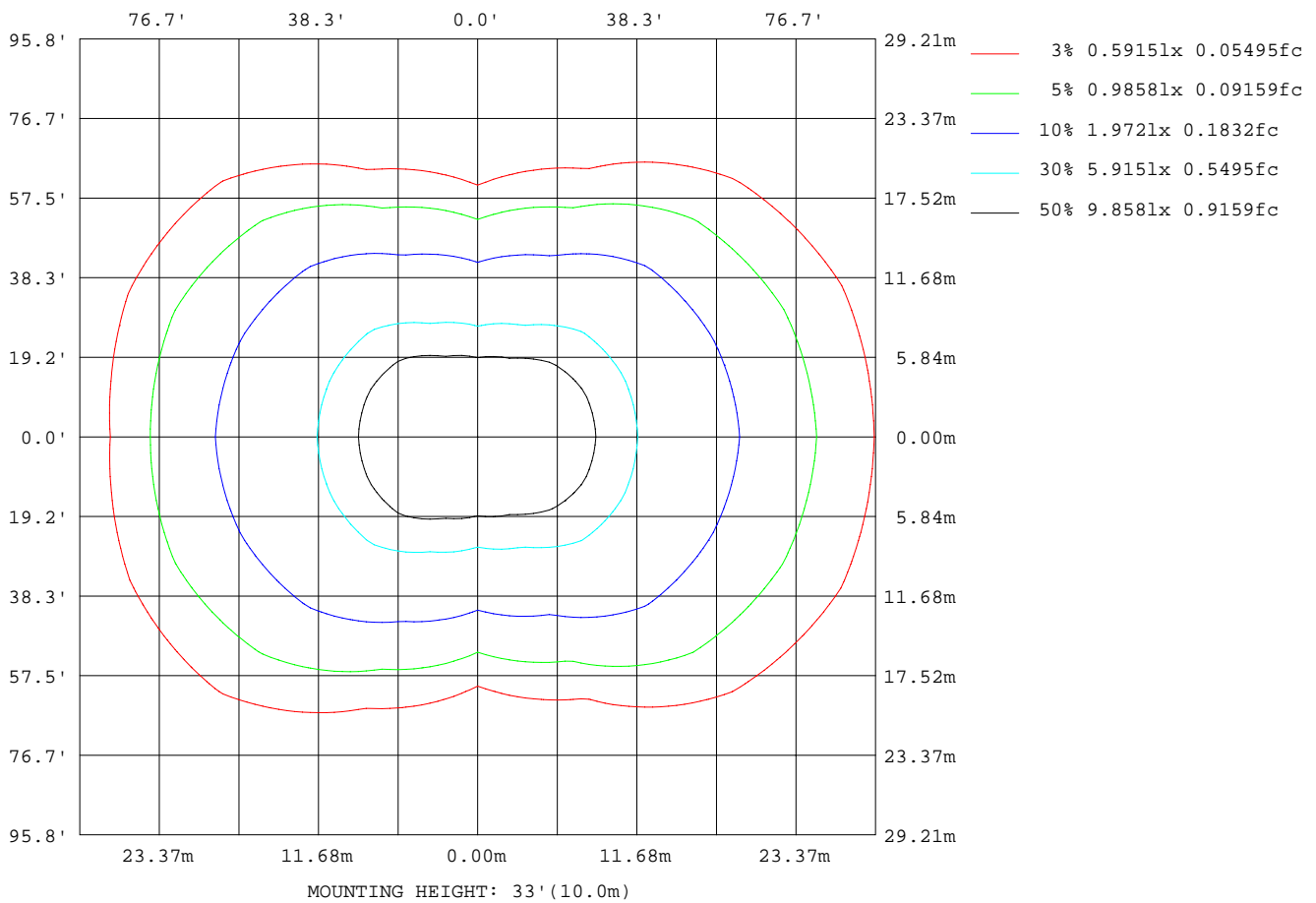
Note:The Curves indicate the illuminated area and the average illumination when the luminaire is at different distance.

C Range: 0 - 360DEG
 C Interval: 22.5DEG
 Test Speed: HIGH
 Temperature:25.3DEG
 Operators:
 Test Date:2025-09-28

γ Range: 0 - 90DEG
 γ Interval: 1.0DEG
 Test System:EVERFINE GO-2000A_V1 SYSTEM V2.0.406.10
 Humidity:65.0%
 Test Distance:11.700m [K=1.0000]
 Remarks:

ISOLUX DIAGRAM

Test:U:229.69V I:0.3438A P:77.961W PF:0.9872 Freq:49.99Hz Lamp Flux:7904.68x1 lm		
NAME:	TYPE:	WEIGHT:
SPEC.:	DIM.: 960*42*38	SERIAL No.:
MFR.: NLD25-0020-01	SUR.:0.79*0.035	Shielding Angle:



C Range: 0 - 360DEG
C Interval: 22.5DEG
Test Speed: HIGH
Temperature: 25.3DEG
Operators:
Test Date: 2025-09-28

γ Range: 0 - 90DEG
 γ Interval: 1.0DEG
Test System: EVERFINE GO-2000A_V1 SYSTEM V2.0.406.10
Humidity: 65.0%
Test Distance: 11.700m [K=1.0000]
Remarks:

LED Avg.L Report

Test:U:229.69V I:0.3438A P:77.961W PF:0.9872 Freq:49.99Hz Lamp Flux:7904.68x1 lm		
NAME:	TYPE:	WEIGHT:
SPEC.:	DIM.: 960*42*38	SERIAL No.:
MFR.: NLD25-0020-01	SUR.:0.79*0.035	Shielding Angle:

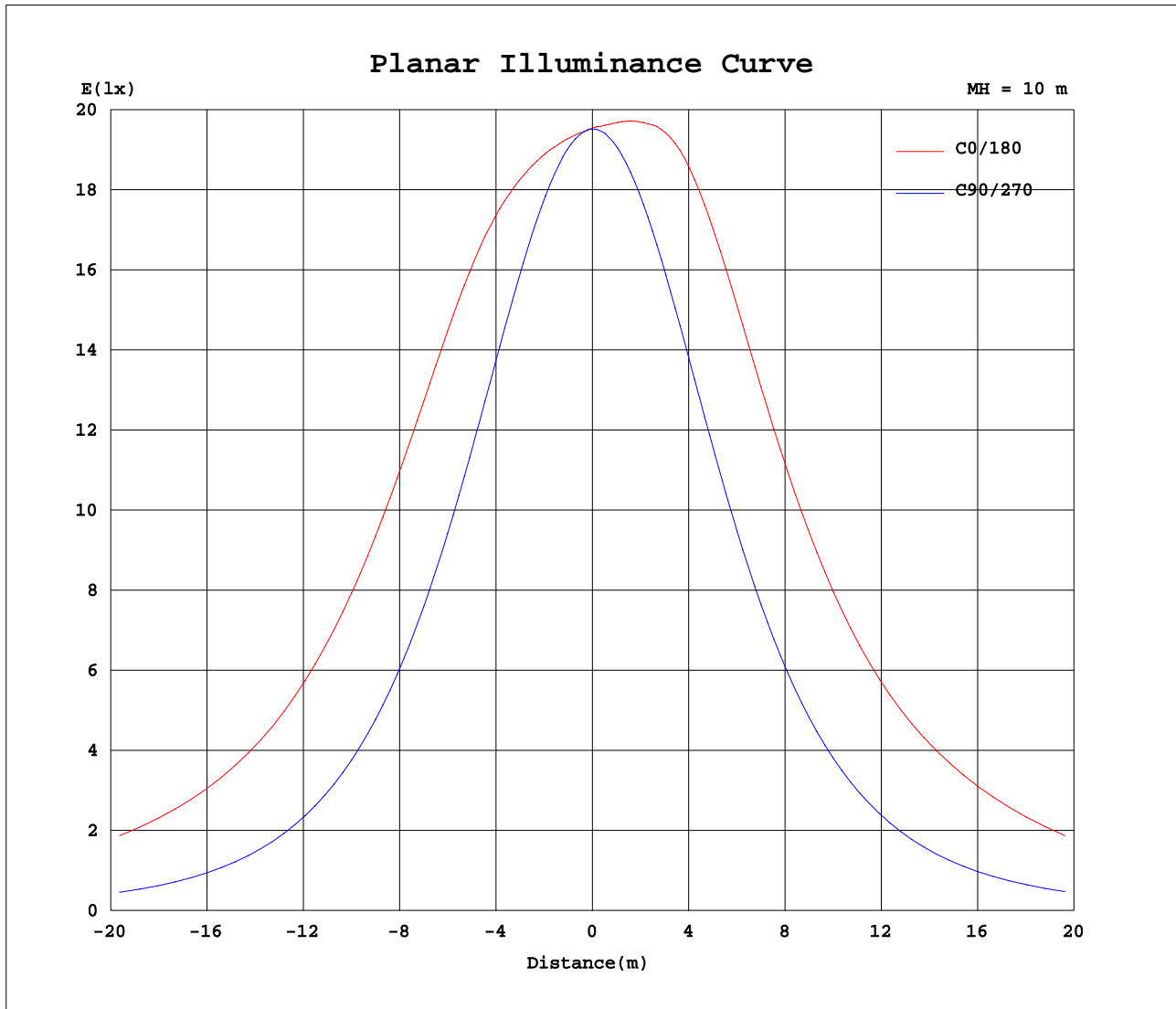
AvgL	cd/m2
L_0~180(65)av	166800
L_0~180(75)av	110284
L_0~180(85)av	37692
L_90~270(65)av	37873
L_90~270(75)av	30715
L_90~270(85)av	27261
L_45(65)av	128003
L_45(75)av	158042
L_45(85)av	49542

Standard: GB/T 29293-2012

C Range: 0 - 360DEG
C Interval: 22.5DEG
Test Speed: HIGH
Temperature:25.3DEG
Operators:
Test Date:2025-09-28

γ Range: 0 - 90DEG
γ Interval: 1.0DEG
Test System:EVERFINE GO-2000A_V1 SYSTEM V2.0.406.10
Humidity:65.0%
Test Distance:11.700m [K=1.0000]
Remarks:

Planar Illuminance Curve



C Range: 0 - 360DEG
C Interval: 22.5DEG
Test Speed: HIGH
Temperature: 25.3DEG
Operators:
Test Date: 2025-09-28

γ Range: 0 - 90DEG
 γ Interval: 1.0DEG
Test System: EVERFINE GO-2000A_V1 SYSTEM V2.0.406.10
Humidity: 65.0%
Test Distance: 11.700m [K=1.0000]
Remarks:

```

γ Range: 0 - 90DEG
γ Interval: 1.0DEG
Test System:EVERFINE GO-2000A_V1 SYSTEM V2.0.406.10
Humidity:65.0%
Test Distance:11.700m [K=1.0000]
Remarks:

```